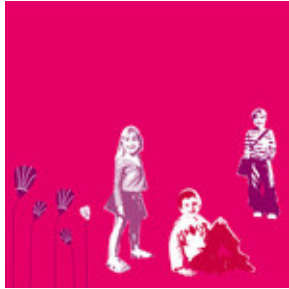


Helping families and building a strong civil society

Lessons fra Mothers Help in Denmark

Mads Roke Clausen

October 2010



The Mother's Help

- We are a voluntary humanitarian organisation.
- We provide social, educational, financial and health related counselling for pregnant, single mothers and families with children.
- We are working for increased public and political understanding for vulnerable and victimised families with children and their conditions.
- We are professional counsellors complemented by voluntary staff. We have 100 salaried and 600 voluntary staff members. (37% of the resources are voluntary staff).
- Last year more than 7,000 individuals contacted us.



We have taken on the following salaried staff:

- Social care workers
- Psychologist
- Social educator
- Health visitor
- Midwife
- Attorney-at-law
- Administration

And the following voluntary staff:

- Educational mentor – helping to complete an education
- Life mentor – providing advice about budgets, raising of children, housekeeping, girlfriends/boyfriends - well practically life in general
- Social care workers
- The Mobile Cake man/woman
- Second hand store
- Holidays
- Board member



We have adopted four principles which apply to all our programmes:

- Holistic
- Preventative - Our aim is to make our clients independent and self-supporting.
- Independent
- Results oriented



One of our most important focus areas is called “Get started” which caters for young pregnant women and mothers up to 25 years of age.

Focus on:

- Education/occupation - because self-support is an important goal.
- The parental role - because you cannot finish an education if your children are not put to bed until 10 pm and you then need to do your homework late in the evening.
- Network - because many women are very lonely.



We offer the following activities in the project:

- Pregnant group
- Maternity leave - mother-and-baby groups, support to assume the role of a parent, diet/health.
- Educational and vocational guidance - identification, company and school visits/practical training.
- Individual social and psychological guidance
- Creating networks - groups and networks
- Mentor programme

Special vulnerability features among the participants in the Get Started project 2007



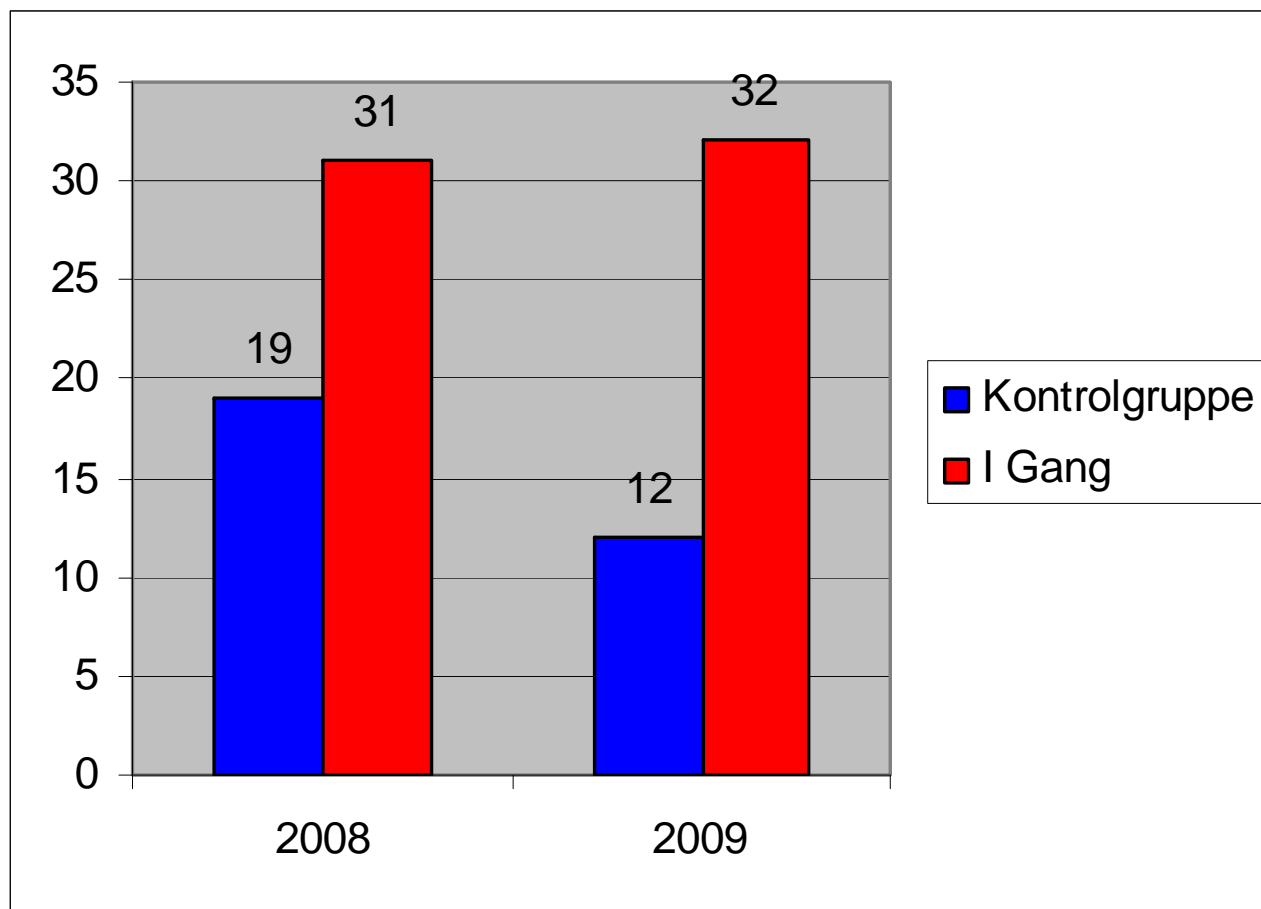
- 76% have been subjected to repeated negligence and breach of confidence from adults during their childhood.
- 57% grew up in homes broken up due to divorce
- 31% have suffered or suffer from diagnosed mental disorders such as depression, anorexia, anxiety, phobias etc.
- 41% grew up in homes marked by violence
- 33% grew up in homes marked by alcohol abuse or other abuse
- 27% have had serious alcohol or drug problems
- 25% have at some point during their adolescence been placed in care
- 25% have been subjected to serious psychological and physical violence from the father of their child
- 8% have been subjected to or witnessed incest
- 25% have been referred under children or young peoples measures offered by the authorities

Case: Anne and her daughter Maja





The share of Get started participants who have started an education and found a job.



Kilde: Særkørsel på DREAM, CASA og Danmarks Statistik



Mødrehjælpen



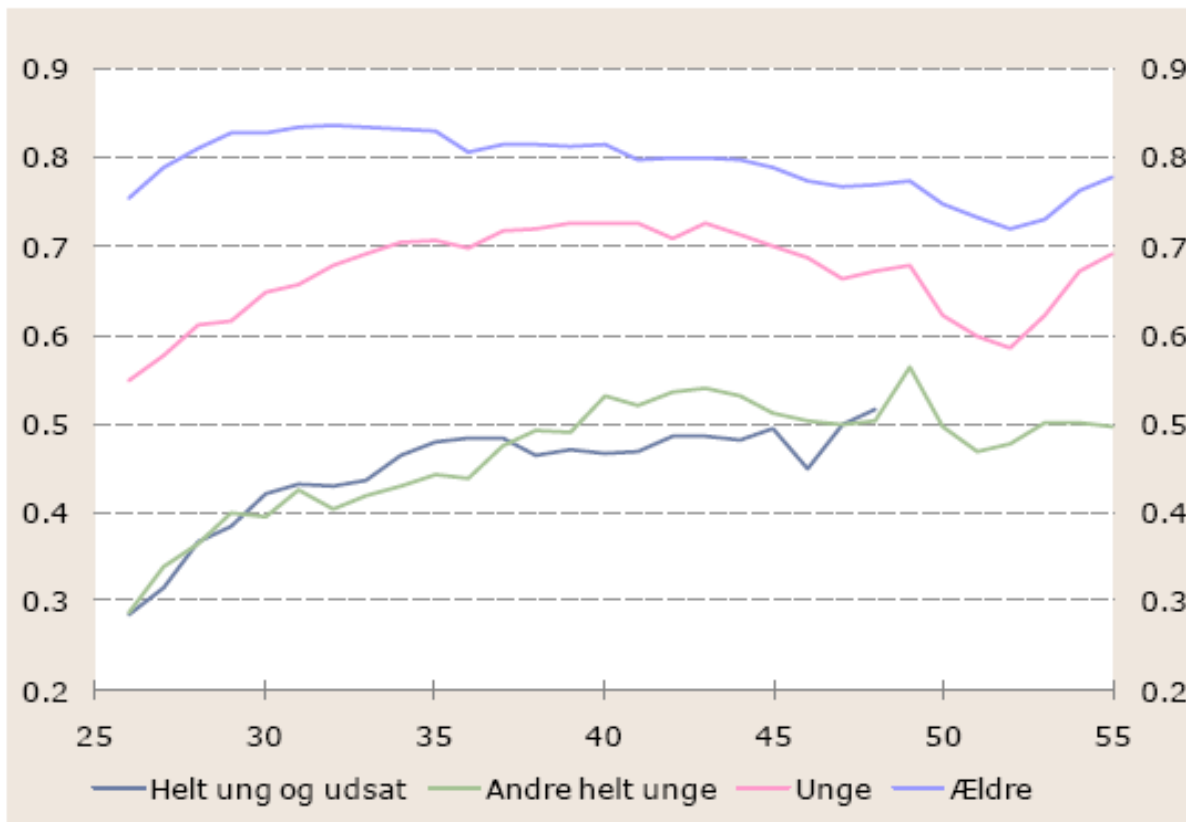
Helt ny analyse af unge mødre

Udarbejdet af Centre for Economic and Business Research (CEBR) for Mødrehjælpen - maj 2010



The share of mothers who have taken further education.

FIGUR 2 ANDELEN AF MØDRE MED EN KOMPETENCEGIVENDE UDDANNELSE



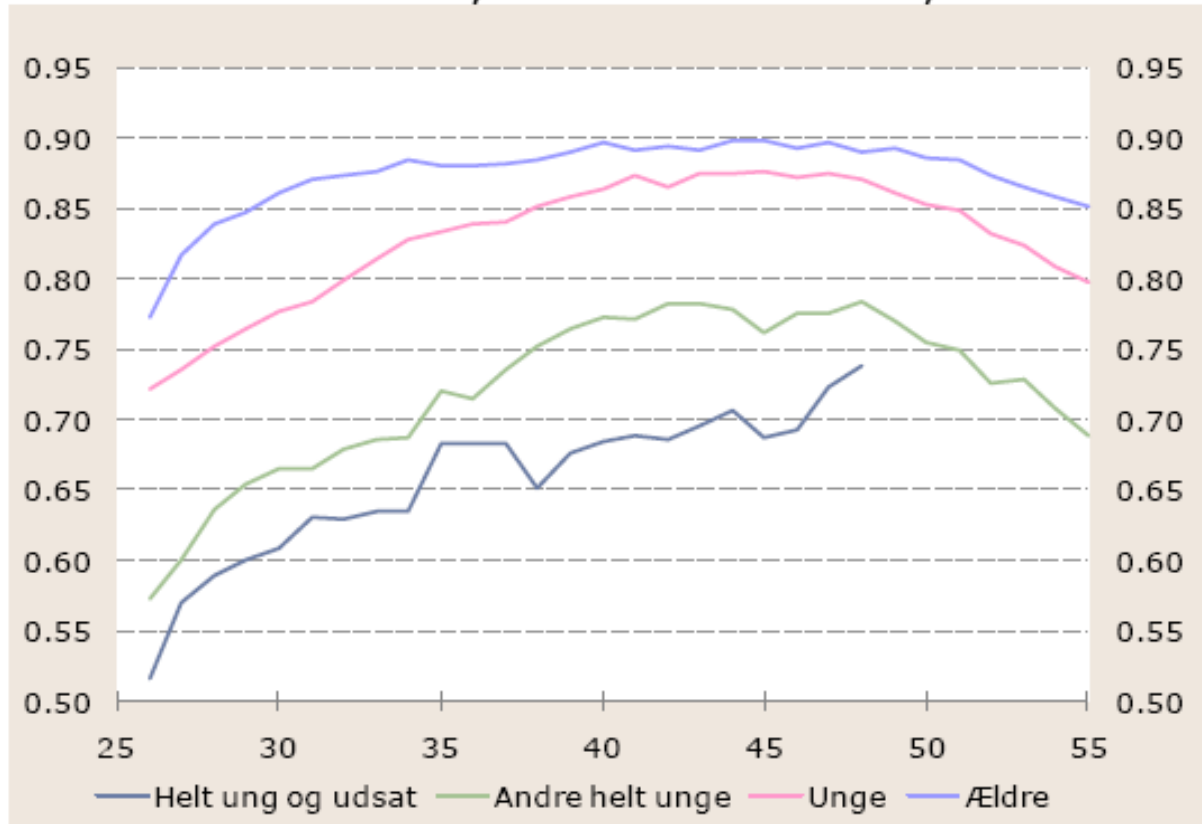
Kilde: Danmarks Statistik og beregninger fra CEBR, 2010



Mødrehjælpen

The share of mothers who had a job.

FIGUR 1 ANDELEN AF MØDRE, DER VAR I BESKÆFTIGELSE, 2007



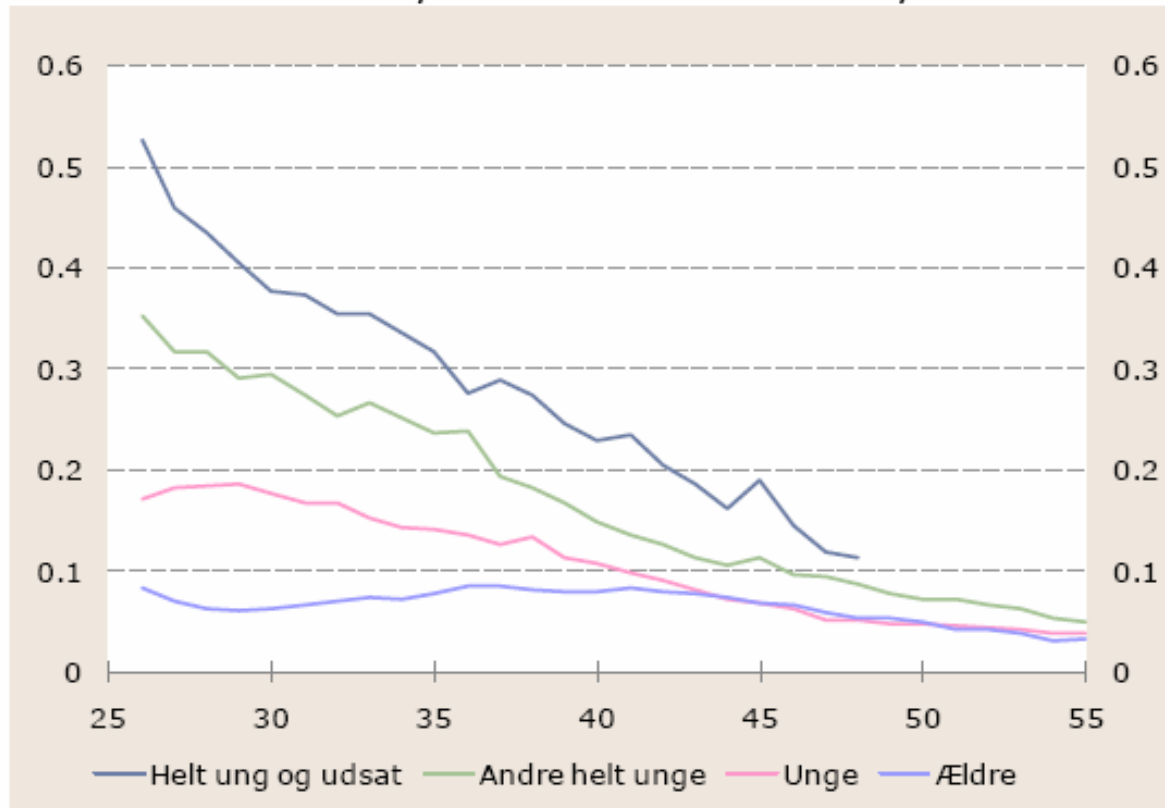
Kilde: Danmarks Statistik og beregninger fra CEBR, 2010



Mødrehjælpen

The share of mothers on cash benefits.

FIGUR 6 ANDEL AF MØDRE, DER MODTOG KONTANTHJÆLP, 2007



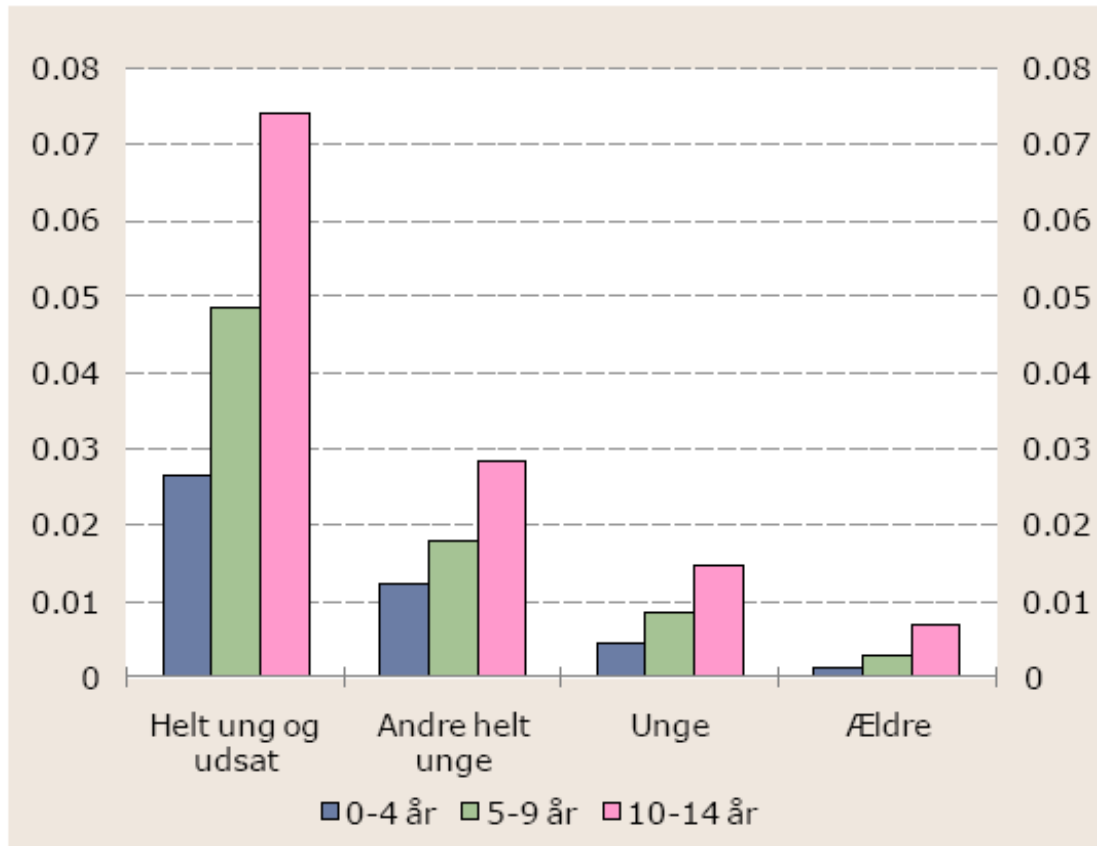
Kilde: Danmarks Statistik og beregninger fra CEBR, 2010



Mødrehjælpen

The share of children who were placed in care.

FIGUR 9 ANDELEN AF BØRN ANBRAGT UDEN FOR HJEMMET

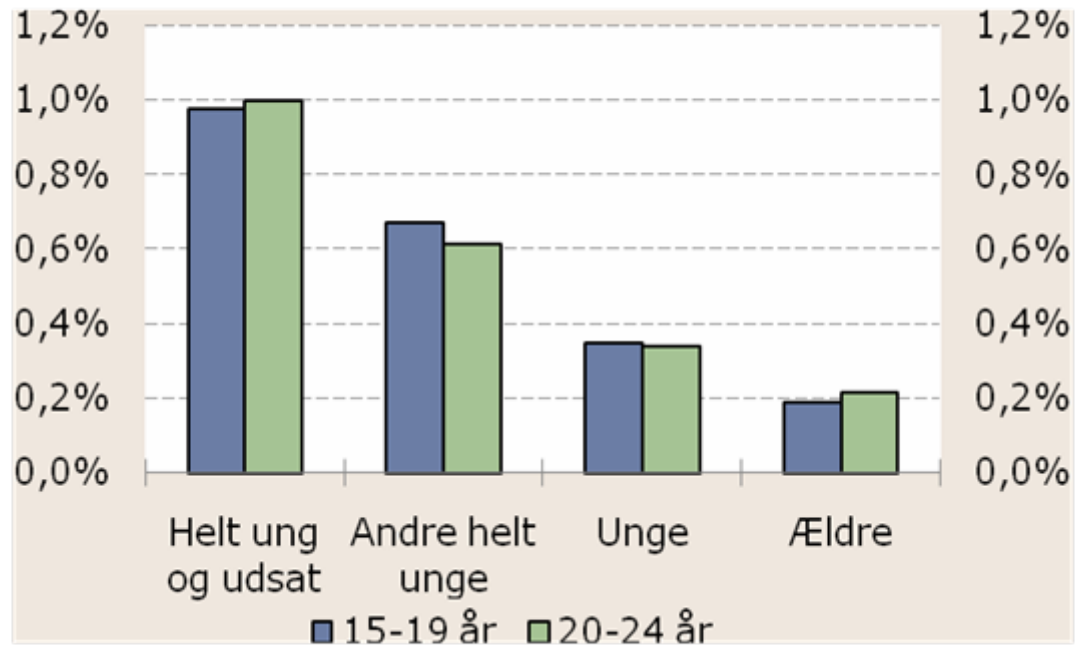


Kilde: Danmarks Statistik og beregninger fra CEBR, 2010



The share of children with a criminal record of aggravated assault

Procentandel af børn med strafferetlig afgørelse indenfor grov vold, 2005-2007



Anm.: Kategorierne på den vandrette akse vedrører mødre. Grov vold er drab, legemsbeskadigelse, alvorligere vold og frihedsberøvelse.

Kilde: Danmarks Statistik og egne beregninger.



The social economic accounts for Get started

Main scenario:

Revenue	199,000
Costs for Get started	40,000

Gains 159,000 per young mother

Challenges in 2002-2004



Mødrehjælpen

- No goals for the assistance provide
- Unable to finance our activities
- Voluntary staff left us



Mødrehjælpen

Focus on five areas - and thus cut a number of activities.

- The quality of our counselling
- The quality of our management
- Progress of voluntary work
- Development of a strong economy
- Our advocacy work - how we could best play a role in society

Economic Violence



**Money is often used as
a means of power**

**The impending financial abyss makes
women seek help to solve their financial
problems**

**In a safe environment women will often
open up and tell their story.**

Advice for Life

in partnership with Nykredit, Mothers Help and
Østifterne

Independent financial, legal
and social counselling

Volunteer mentors from
Nykredit

In 2009 and 2010,
the project will help 600
women in Denmark

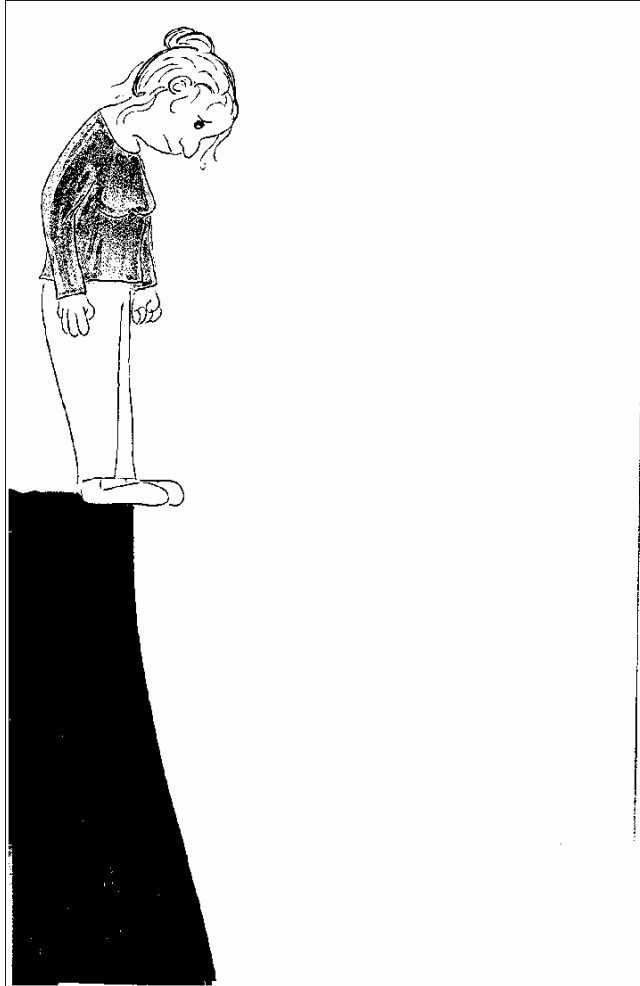
Aims to ensure their future
independence.



Social workers, financial mentors and lawyers

Råd til Livet

The financial abyss

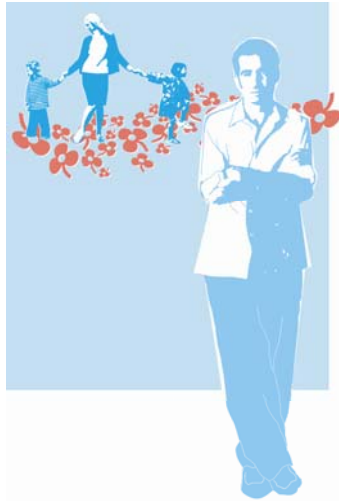


Violence is taboo! We do not talk about it.

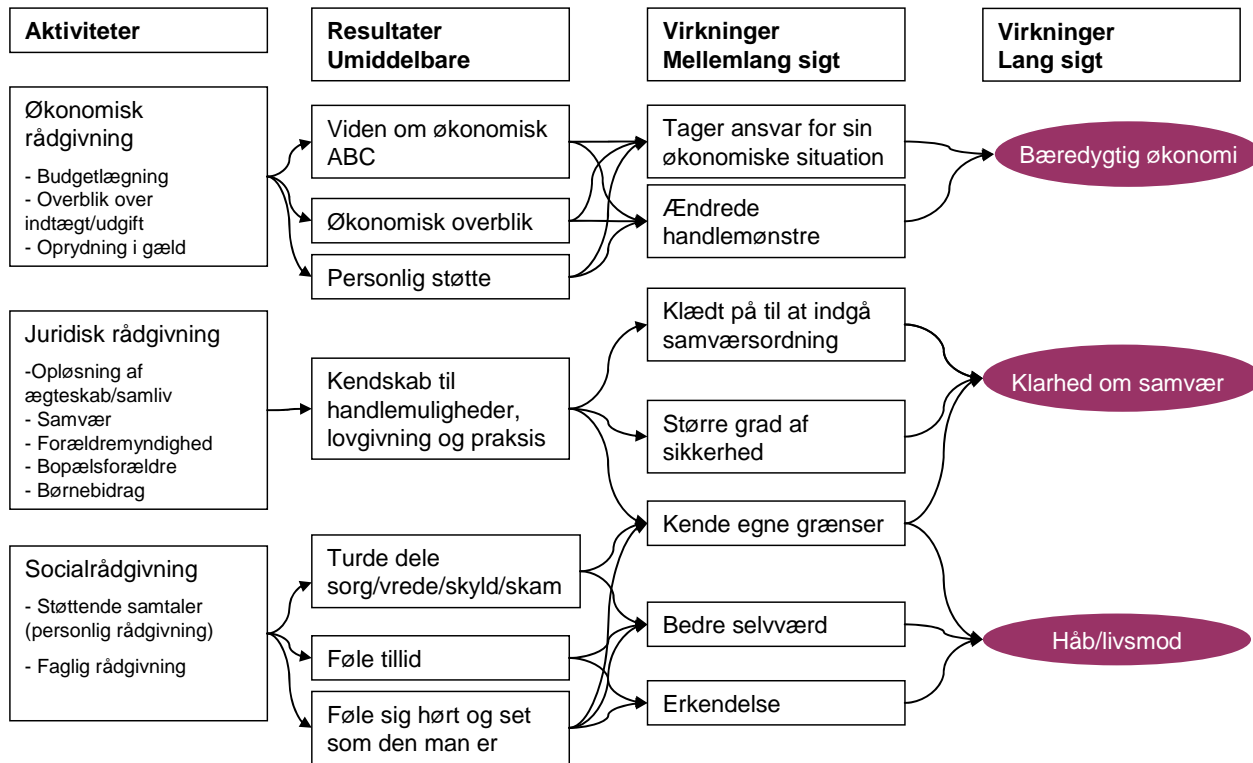
The impending financial abyss makes women seek help to solve their financial problems.

In a safe environment women will often open up and break down the taboos.

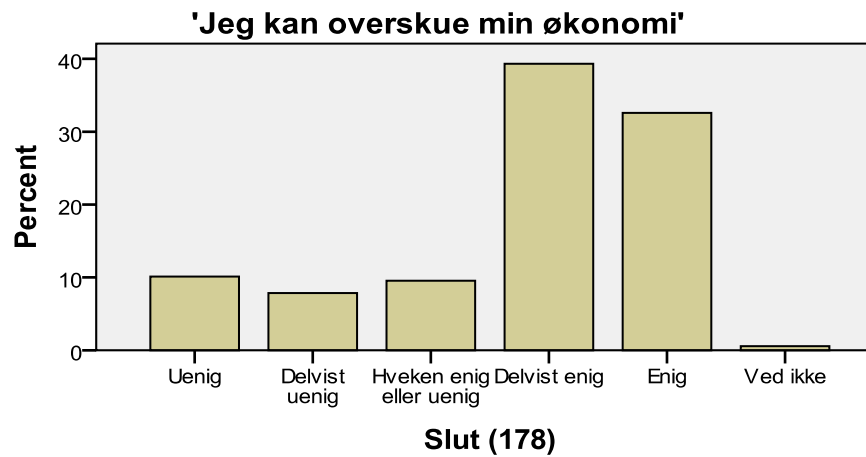
Råd til Livet



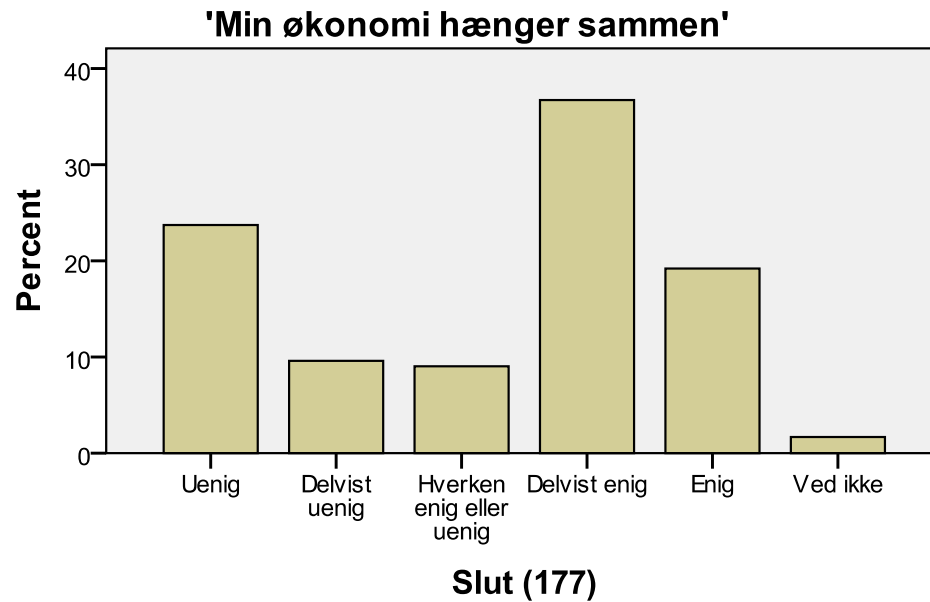
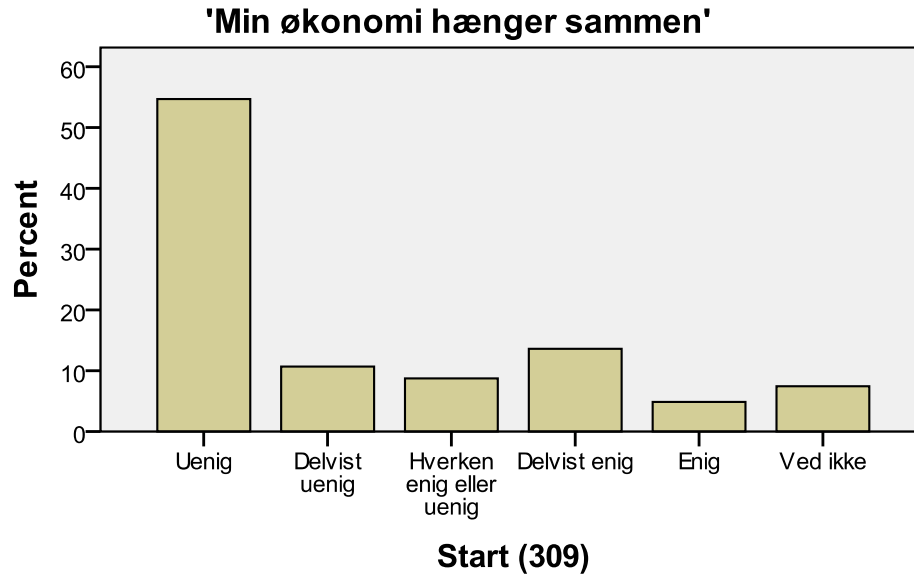
Forandringsteori



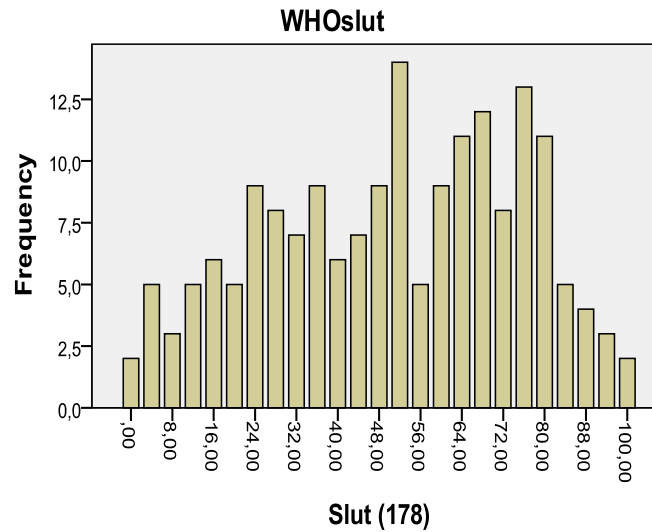
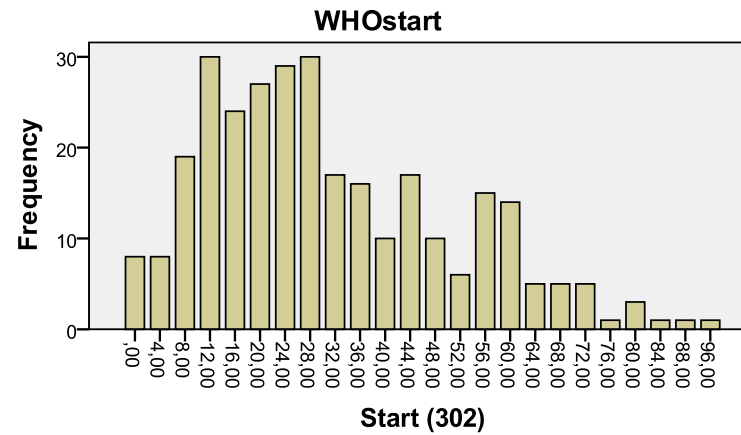
I can keep track of my financial affairs



My financial affairs make sense



Risk of depression - the WHO scale



Measuring happiness

Følelse af overskud i hverdagen



1 %



7,3 %



36,5 %

Start (315)



40 %



14,9 %

Følelse af overskud i hverdagen



4,5 %



32,4 %



39,7 %

Slut (179)



16,8 %



6,6 %

Organization

Recruitment strategy

Old school
(hierarchy and structure)

Ad hoc
(emotional appeal)

Focus on high competencies

No focus on competencies

<p style="text-align: center;">A</p> <p style="text-align: center;">Eldre Sagen</p>	<p style="text-align: center;">B</p> <p style="text-align: center;">Gazelles</p> <p style="text-align: right;">URK</p>
<p style="text-align: center;">C</p> <p style="text-align: center;">Stagnant organisations</p>	<p style="text-align: center;">D</p> <p style="text-align: center;">Facebook Klima demo</p>

Mothers help

↔

Advice for enhancing voluntary commitment

- The Minister for social affairs in Denmark has set up a council of volunteers
- The Danish government - has recently prepared a strategy on how you can strengthen the carrying capacity in civil society and increase the voluntary efforts overall
- Investment programme on \$ 20.000.000
- The Voluntary Council has also put forward a strategy on stronger voluntary commitment in society

Advice for enhancing voluntary commitment

The voluntary organisations are **gate keepers** for making more volunteers join in.

And that is one of the reasons why it is an advantage to make them even more involved in the **welfare production**.

But a precondition for increased commitment must be that the organisations are familiar with their **own results** and can **learn from their efforts**.

Is that a **barrier to recruiting more voluntary resources**? No, on the contrary - the voluntary resources are also **proud** to be part of a **successful aid programme**.

A handful of people can change the world,
as a matter of facts,
nobody else can